



SHRI SAI

ECO SOLUTIONS PVT. LTD.

PRODUCT CATALOGUE

www.shrisai-india.com

#YourGeotechnicalSolutionsPartner

INDEX

Introduction	01
Gabion Box	02 - 06
SSMESH System	07 - 09
SSRHOMBUS Wire Rope Panel	10
SSGRID System	10
SSNETTING Rockfall Netting	11
SSMAT Erosion Control Blanket	12
SSDRAIN Drainage Composite	13 - 14
SSLINK – Geogrid	14 - 15
SSGEOTEX - Geotextiles	16

HIGH QUALITY PRODUCT SOLUTIONS FOR GEOTECHNICAL, ENVIRONMENTAL AND CIVIL ENGINEERING

Shri Sai Eco Solutions Pvt. Ltd. is one of the leading Geotechnical, Environmental and Civil Engineering in India. Established in 2018, and led by an experienced team, we have successfully completed many projects across India and abroad in no time.

We provide environmentally friendly solutions for the full spectrum of geotechnical engineering capability from planning, designing, innovation, implementation and supervision.

Our project line-up includes work in major sectors like thermal power plants, refineries, bridges & highways, commercial & residential infrastructure, metro & railways, river bank etc.



INTRODUCTION

Looking at constantly changing environment and its challenging impact, whether those challenges inates from forces of nature or whether they come from the ever increasing difficulties of people living within this environment with the need for infrastructure development and better utilization of available land. "Shri Sai Eco Solutions Pvt. Ltd." along with "Shri Sai Gabion and Fencing" provides complete solutions from planning, design, developing, implementing and maintaining all turnkey projects of our clients.



ABOUT US

SSES has grown from a small startup to a professional organization with better understanding and successful completion of projects with great innovation and scientific procedure. At SSES, we have established our reputation as a company committed to providing engineering solutions to complex geotechnical problems as well as developing economic and safe designs for environmental problems.



For us at SSES, "QUALITY" is a habit, to actively pursue on a routine basis, not something that is unwillingly imposed upon its staff by the company management. We recognize our commitment to the society at large and are aware of the implications of our work in nation building. We work with the motto "We protect environment today for tomorrow's progress"



GABION BOX

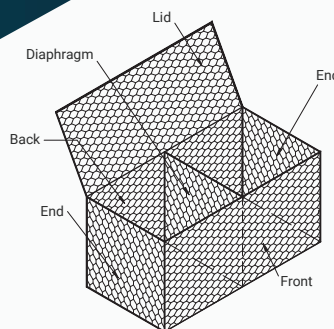
DOUBLE TWIST HEXAGONAL SHAPE GABION BOX



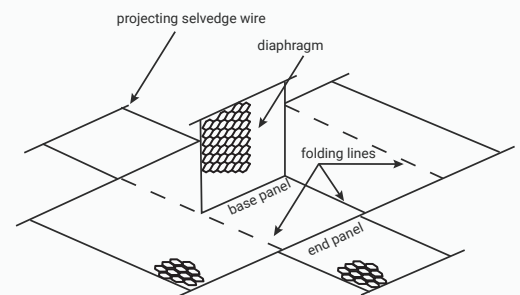
The Hot dip galvanised wire used to manufacture the double twisted hexagonal wire mesh is soft annealed, low carbon content mild steel wire with heavy zinc coating as per IS 280, EN10224/ASTM A 641. For aggressive natural conditions, further coating of advance Polymer / Polyvinyl Chloride (PVC) is done of 0.50mm thickness uniformly.

SSES Gabion box is hexagonal shape wire mesh container of variable sizes, uniformly partitioned into internal cells, interconnected with other similar units and filled with stone at the project site to form flexible, permeable monolithic structures to protect land from erosion, construction of earth retaining structure, river embankment etc.

A non-raveling mesh made by twisting continuous pairs of wire through two one half turn (Generally refer as Double Twist) to form hexagonal shape openings which are then interconnected to adjacent wires to form hexagonal openings.

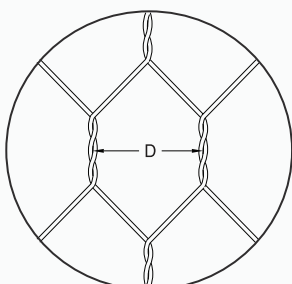


Gabion Mesh (Showing Mesh wire, Selvedge wire and Edge wire)



Gabion Mesh (Showing Mesh wire, Selvedge wire and Edge wire)

MESH TYPE & SIZES



Mesh Size :- Mesh size (D) is average distance measured at right angles between the twisted wire.

Mesh Type	Nominal Size (D Value)	Tolerance
100mm X 120mm	100mm	+ 10% / - 10%
80mm X 100mm	80mm	+ 10% / - 10%
60mm X 80mm	60mm	+ 10% / - 10%



Hydraulic Works

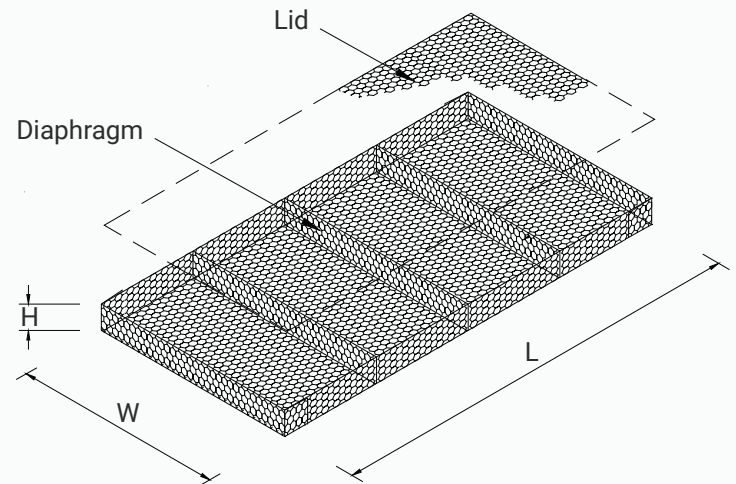


Retaining Walls & Soil Reinforcement

DOUBLE TWIST HEXAGONAL SHAPE GABION MATTRESS



SSES Revet Mattress is hexagonal shape wire mesh container of variable sizes, uniformly partitioned in to internal cells with relatively smaller height in relation to other dimensions, having smaller mesh opening than the mesh used for gabions, revet mattresses are generally used for river bank protection and channel linings. Generally the height of revet mattresses is less than 0.50 meter and it is used together to reduce the water velocity and recapture river bed sediment in streams and widely used in river course where soil erosion is a problem.



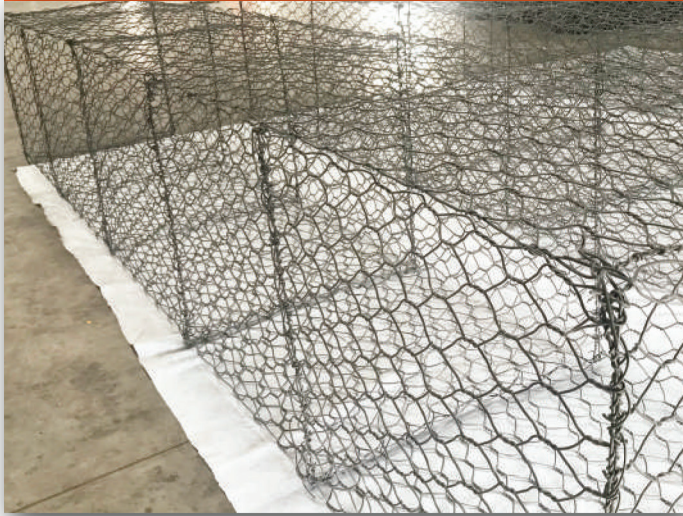
Coastal & Pipeline Protection



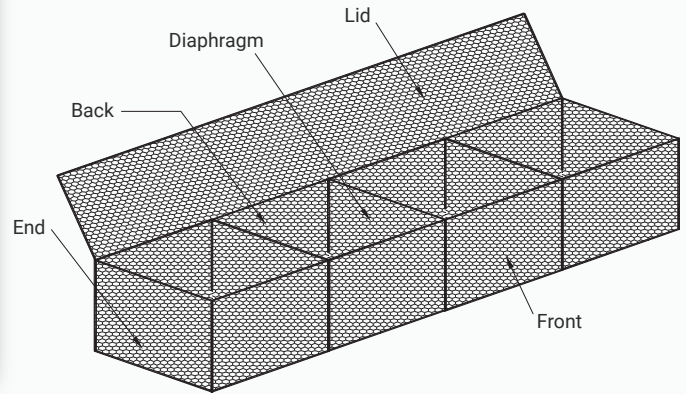
Soil Erosion Control



DOUBLE TWIST JUMBO GABION BOX



SSES Jumbo Gabion box are larger than regular Gabion box and are used for large scale civil engineering projects. Jumbo Gabion are similar to regular Gabion in all other aspect. Usually in Jumbo Gabion width is 1.50 meter and 2.0 meter compare to 1.0 meter width in regular Gabion.



JUMBO BOX SIZES

- 1 3.0 (L) X 1.5 (W) X 1.0 (H)/ 2 Centre Diaphragm
- 2 3.0 (L) X 2.0 (W) X 1.0 (H)/ 2 Centre Diaphragm
- 3 4.0 (L) X 1.5 (W) X 1.0 (H)/ 3 Centre Diaphragm
- 4 4.0 (L) X 2.0 (W) X 1.0 (H)/ 3 Centre Diaphragm
- 5 5.0 (L) X 1.5 (W) X 1.0 (H)/ 4 Centre Diaphragm
- 6 5.0 (L) X 2.0 (W) X 1.0 (H)/ 4 Centre Diaphragm



TECHNICAL DATA

S. No	Characteristics	Mesh Type 10 × 12 D = 100 mm			Mesh Type 8 × 10 D = 80 mm		
		Only Zinc	Zinc Alloy ² coated	Zinc / Zinc Alloy ² + Polymer coated	Only Zinc	Zinc Alloy ² coated	Zinc / Zinc Alloy ² + Polymer coated
01	Mesh wire dia, mm	2.70	3.00	2.70/3.70	2.70	3.00	2.70/3.70
02	Edge/Selvedge wire dia, mm	3.40	3.90	3.40/4.40	3.40	3.90	3.40/4.40
03	Lacing wire dia, mm	2.20	2.20	2.20/3.20	2.20	2.20	2.20/3.20
04	Polymer coating thickness, mm	NA	NA	Nominal – 0.50 Minimum – 0.40	NA	NA	Nominal – 0.50 Minimum – 0.40
05	Typical sizes Length × Width × Height (m) (Number of diaphragms)	4 × 1 × 1 (3 Nos.), 3 × 1 × 1 (2 Nos.), 2 × 1 × 1 (1 No.), 1.5 × 1 × 1 (0 No.), 2 × 1 × 0.5 (1 No.), 3 × 1 × 0.5 (2 Nos.), 4 × 1 × 0.5 (3 Nos.), 2 × 1 × 0.3 (1 No.), 3 × 1 × 0.3 (2 Nos.), 4 × 1 × 0.3 (3 Nos.)					
06	Tolerances in size of gabion boxes	Length and Width... ± 5 percent; Height > 0.3 m... ± 5 percent and Height < 0.3 m... ± 10 percent					

TECHNICAL DATA

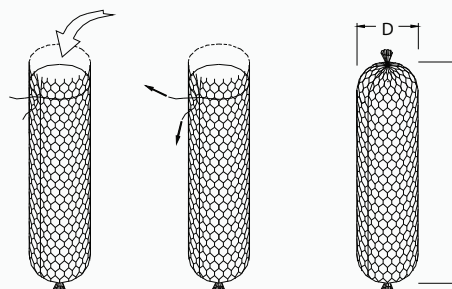
S. No	Characteristics	Mesh Type 6×8 D = 60 mm	
		Only Zinc / Zinc Alloy ² coated	Zinc / Zinc Alloy ² +Polymer coated
01	Mesh wire dia, mm	2.20	2.20/3.20
02	Edge/Selvedge wire dia, mm	2.70	2.70/3.70
03	Lacing wire dia, mm	2.20	2.20/3.20
04	Polymer coating thickness, mm	NA	Nominal – 0.50 Minimum – 0.40
05	Typical sizes Length × Width × Height (m) (Number of diaphragms)	4 × 1 × 1 (3 Nos.), 3 × 1 × 1 (2 Nos.), 2 × 1 × 1 (1 No.), 1.5 × 1 × 1 (0 No.), 2 × 1 × 0.5 (1 No.), 3 × 1 × 0.5 (2 Nos.), 4 × 1 × 0.5 (3 Nos.), 2 × 1 × 0.3 (1 No.), 3 × 1 × 0.3 (2 Nos.), 4 × 1 × 0.3 (3 Nos.)	
06	Tolerances in size of gabion boxes	Length and Width... ± 5 percent; Height < 0.3 m... ±10 percent and	

We ensure 100% quality product by complying quality assurance plan under ISO 9001:2015 norms and meeting the quality standard IS16014 and international standard ASTM and EN.

DOUBLE TWIST CYLINDRICAL/ SACK GABION



SSES Cylindrical/Sack Gabion is hexagonal shape wire mesh unit with a lateral opening to allow the stone filling or SSGEOTextile encased sand filling at site. Cylindrical / Sack Gabion are generally used for river bank protection, scour protection of bridge or a situation where immediate protection is required from erosion effect of water. These cylindrical units of Gabion are filled with stone lifted into position using suitable equipment and stacked upon one another to make structure of contained rocks.





Soil Erosion Control



Coastal & Pipeline Protection



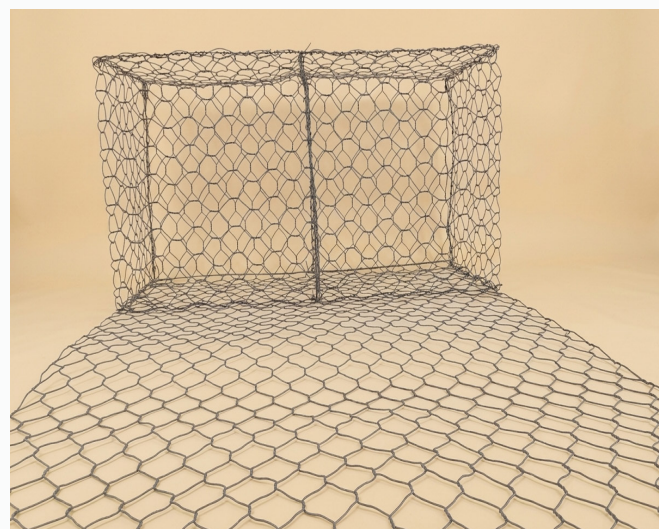
Hydraulic Works

TECHNICAL DATA

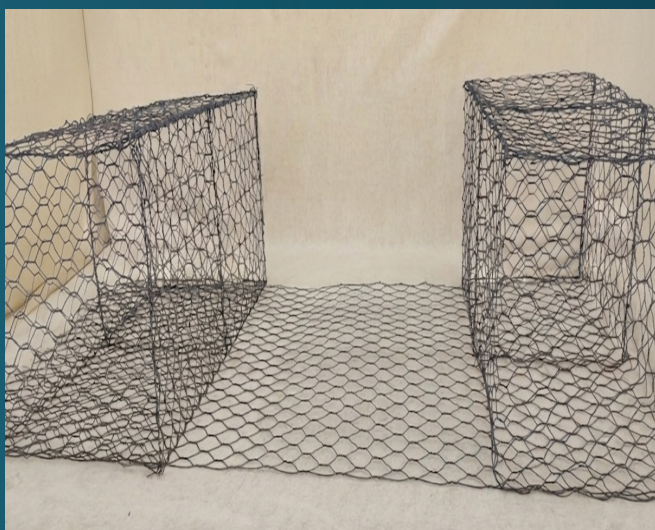
S. No	Characteristics	Mesh Type 10 × 12 D = 100 mm			Mesh Type 8 × 10 D = 80 mm		
		Only Zinc	Zinc Alloy ² coated	Zinc / Zinc Alloy ² + Polymer coated	Only Zinc	Zinc Alloy ² coated	Zinc Alloy ² coated
01	Mesh wire dia, mm	2.70	3.00	2.70/3.70	2.70	3.00	2.70/3.70
02	Edge/Selvedge wire dia, mm	3.40	3.90	3.40/4.40	3.40	3.90	3.40/4.40
03	Lacing wire dia, mm	2.20	2.20	2.20/3.20	2.20	2.20	2.20/3.20
04	Polymer coating thickness, mm	NA	NA	Nominal – 0.50 Minimum - 0.40	NA	NA	Nominal – 0.50 Minimum – 0.40
05	Typical sizes Length × Width × Height (m) (Number of diaphragms)	1.5x0.74, 2x0.96					
06	Tolerances in size of gabion boxes	Length and Width... ± 5 percent; Height > 0.3 m... ± 5 percent and Height < 0.3 m... ± 10 percent					

SSMESH SYSTEM

SSES SSMESH system is one of the systems used in the construction of reinforced soil retaining structures. Reinforced soil retaining structures are executed by combining the embankment behind the front side of the retaining structure with tensile elements such as geomesh, hexagonal mesh, traps, etc. This type of structure is stable thanks to the interaction of tensile elements and the surrounding backfilled soil. The front side of the structure serves an aesthetic purpose and prevents local erosion, but does not significantly contribute to the overall stability of the structure as a whole.



DOUBLE SSMESH SYSTEM



SSES Double SSMESH System (Double twist hexagonal shape Gabion Facia with integrated tail) for Reinforcement is a unit for reinforced soil structures and slope consolidation. This is mainly used for structures with vertical facing units. It is made with continuous base panel for the reinforcement and the facing portion of the structure. It can be used for the smaller height structure of up to 8 meter (depending upon geological conditions) and for the taller slopes or structure; it can be used with our Geogrid.

Further, for the structure requirement Gabion Facia can be made at both side (LHS and RHS) with integrated tail for reinforcement. Tail is common for both the facia unit.

The face section of the unit is formed by connecting a back panel and central diaphragms to the main facia unit, this creates the rectangular shape cells used for stone confinement.

CONCLUSION

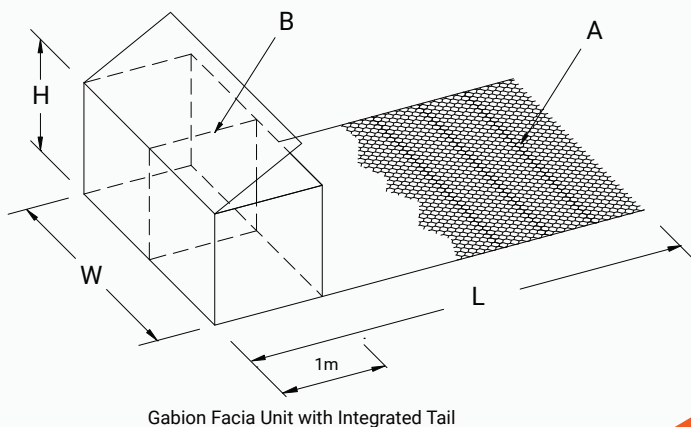
The construction of retaining structures using SSMESH Systems and other reinforced soil systems has significant advantages:

- Height of retaining structures made using reinforced soil can exceed 50.0 m.
- Possibility of filling with excavation material.
- Resistance to significant settlements and displacements (flexible structures).
- Possibility of greening the front side (aesthetically acceptable solution).
- Speed and ease of execution.

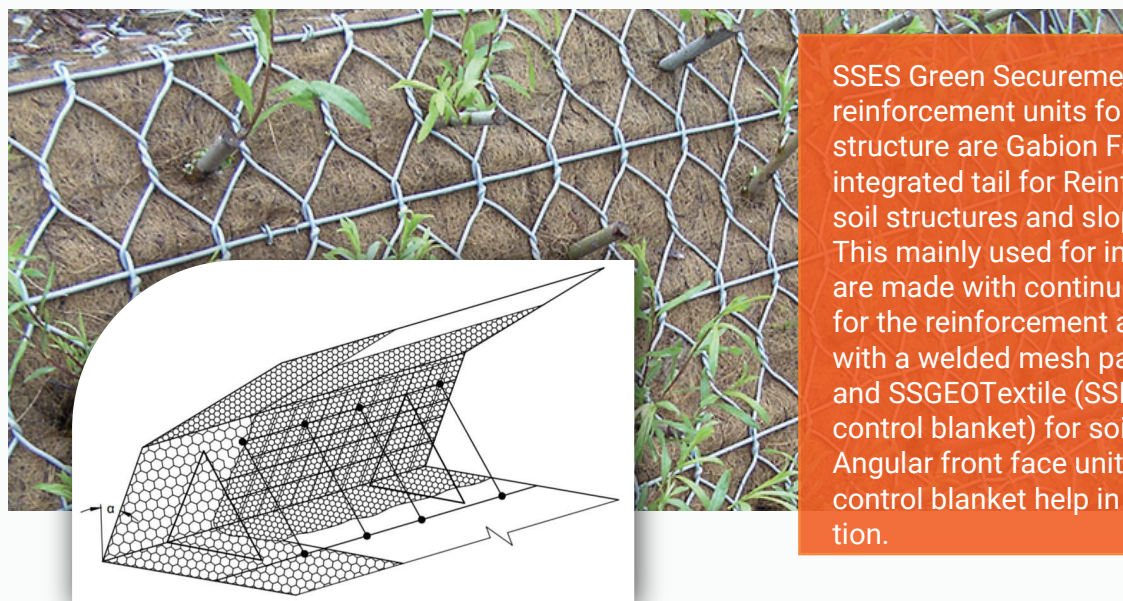


TECHNICAL DATA

S. No	Characteristics	Mesh Type 10×12 D = 100 mm	Mesh Type 8×10 D = 80 mm
		Zinc / Zinc Alloy ² + Polymer coated	Zinc / Zinc Alloy ² + Polymer coated
01	Mesh wire dia, mm	2.70/3.70	2.70/3.70
02	Edge/Selvedge wire dia, mm	3.40/4.40	3.40/4.40
03	Lacing wire dia, mm	2.20/3.20	2.20/3.20
04	Polymer coating thickness, mm	Nominal – 0.50 Minimum – 0.40	Nominal – 0.50 Minimum – 0.40
05	Typical sizes Length × Width × Height (m) (Number of diaphragms)	$3 \times 2 \times 0.5$ (1 No.), $3 \times 3 \times 0.5$ (2 Nos.), $4 \times 2 \times 0.5$ (1 No.), $4 \times 3 \times 0.5$ (2 Nos.), $5 \times 2 \times 0.5$ (1 No.), $5 \times 3 \times 0.5$ (2 Nos.), $6 \times 2 \times 0.5$ (1 No.), $6 \times 3 \times 0.5$ (2 Nos.) $3 \times 2 \times 1$ (1 No.), $3 \times 3 \times 1$ (2 Nos.), $4 \times 2 \times 1$ (1 No.), $4 \times 3 \times 1$ (2 Nos.), $5 \times 2 \times 1$ (2 Nos.), $5 \times 3 \times 1$ (2 Nos.) $3 \times 2 \times 1$ (1 No.), $6 \times 3 \times 1$ (2 Nos.) $3 \times 2 \times 0.8$ (1 No.), $3 \times 3 \times 0.8$ (2 Nos.), $4 \times 2 \times 0.8$ (1 No.), $4 \times 3 \times 0.8$ (2 Nos.), $5 \times 2 \times 0.8$ (2 Nos.), $5 \times 3 \times 0.8$ (2 Nos.), $3 \times 2 \times 0.8$ (1 No.), $6 \times 3 \times 0.8$ (2 Nos.)	
06	Tolerances in size of gabion boxes	Length and Width... ± 5 percent; Height > 0.3 m... ± 5 percent and Height < 0.3 m... ± 10 percent	



GREEN SSMESH SYSTEM



SSES Green Securemesh System soil reinforcement units for retaining structure are Gabion Facia with integrated tail for Reinforcement for soil structures and slope consolidation. This mainly used for inclined structures are made with continuous base panel for the reinforcement and provided with a welded mesh panel for facing and SSGEOTextile (SSMAT Erosion control blanket) for soil retention. The Angular front face unit with erosion control blanket help in natural vegetation.



Retaining Walls & Soil Reinforcement



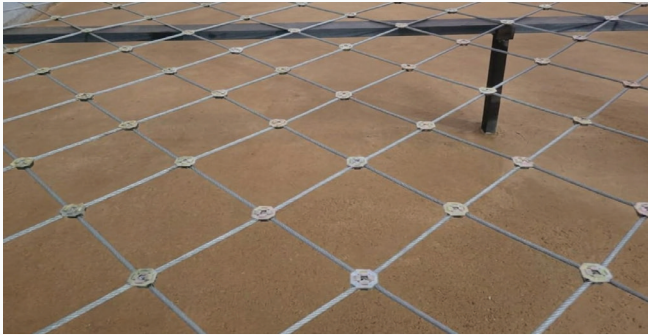
Hydraulic works

TECHNICAL DATA

S. No	Characteristics	Mesh Type 10×12 D = 100 mm	Mesh Type 8×10 D = 80 mm
		Zinc / Zinc Alloy ² + Polymer coated	Zinc / Zinc Alloy ² + Polymer coated
01	Mesh wire dia, mm	2.70/3.70	2.70/3.70
02	Edge/Selvedge wire dia, mm	3.40/4.40	3.40/4.40
03	Lacing wire dia, mm	2.20/3.20	2.20/3.20
04	Polymer coating thickness, mm	Nominal – 0.50 Minimum – 0.40	Nominal – 0.50 Minimum – 0.40
05	Typical sizes Length × Width × Height (m) (Number of diaphragms)	3 × 2 × 0.63 (45), 3 × 2 × 0.76 (60), 3 × 2 × 0.83 (70), 3 × 3 × 0.63 (45), 3 × 3 × 0.76 (60), 3 × 3 × 0.8 (65), 3 × 3 × 0.83 (70), 4 × 2 × 0.63 (45), 4 × 2 × 0.76 (60), 4 × 2 × 0.80 (65), 4 × 2 × 0.83 (70), 4 × 3 × 0.63 (45), 4 × 3 × 0.76 (65), 4 × 3 × 0.83 (70), 5 × 2 × 0.63 (45), 5 × 2 × 0.76 (60), 5 × 2 × 0.80 (65), 5 × 2 × 0.83 (70), 5 × 3 × 0.63 (60), 5 × 3 × 0.8 (65), 5 × 3 × 0.83 (70), 6 × 2 × 0.63 (45), 6 × 2 × 0.76 (60), 6 × 2 × 0.80 (65), 6 × 2 × 0.83 (70), 6 × 3 × 0.63 (45), 6 × 3 × 0.80 (65), 6 × 3 × 0.83 (70),	
06	Tolerances in size of gabion boxes	Length and Width... ± 5 percent; Height > 0.3 m... ± 5 percent and Height < 0.3 m... ± 10 percent	



SSRHOMBUS WIRE ROPE PANEL

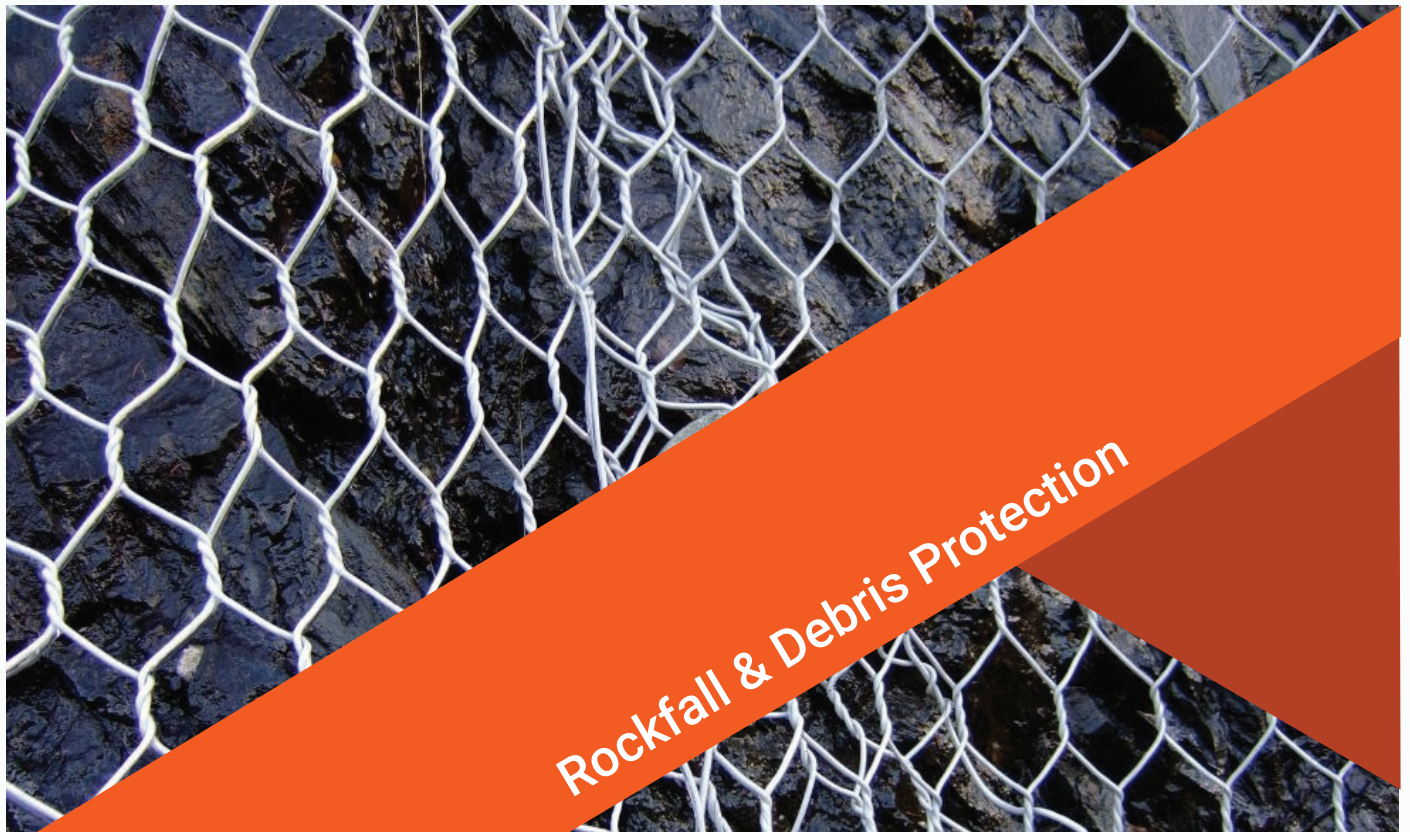


SSRHOMBUS Wire Rope panel (Boulder Net) are used for rockfall protection which is inherent hazard in hilly terrain causing life and property hazard and disrupt smooth operations of traffic at Highways and Railways. In this product stiffness is more important than tensile strength and it helps in absorption of high energy of the falling stone. SSRHOMBUS Wire rope panels (Boulder Net) are made by weaving continuous wire rope of high tensile strength and joined by 'Knot' at each interception connection.

SSGRID SYSTEM



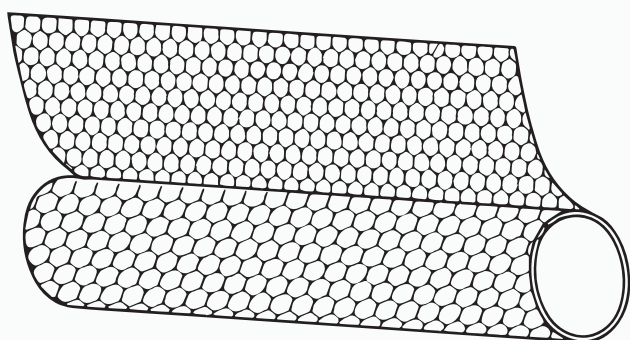
SSGrid system is used for rockfall protection which is inherent hazard in hilly terrain causing life and property hazard and disrupt smooth operations of traffic at Highways and Railways. In this product Traditional Double Twist Mesh is combined with SSRHOMBUS Wire Rope Panel to provide high stiffness and used as drapery system. This is easy to install and can be used along with SSRHOMBUS Wire Rope Panel (boulder net) for areas prone to frequent rockfall. It helps in absorption of high energy of the falling stone.



SSNETTING ROCKFALL NETTING



SSNETTING Rockfall Netting is used for rockfall mitigation and is used as drapery system to prevent rocks and debris falling on to road, highways and railways. Due to non-ravelling mesh made by twisting continuous pairs of wire through three one half turn (Generally refer as Double Twist) to form hexagonal shape openings, the steel wire mesh can withstand the punching force of the falling stone and without unravelling in the event of wire breakage, thus minimizing loss of property or life .



TECHNICAL DATA

S. No	Characteristics	Mesh Type 10×12 D = 100 mm			Mesh Type 8×10 D = 80 mm			Mesh Type 6×8 D = 60 mm	
		Only Zinc / Zinc Alloy ² coated	Zinc / Zinc Alloy ² + Polymer coated	Zinc / Zinc Alloy ² + Polymer coated	Only Zinc / Zinc Alloy ² coated	Zinc / Zinc Alloy ² + Polymer coated	Zinc / Zinc Alloy ² + Polymer coated	Only Zinc / Zinc Alloy ² coated	Zinc / Zinc Alloy ² + Polymer coated
01	Mesh wire dia, mm	2.70	3.00	2.70/3.70	2.70	3.00	2.70/3.70	2.2	2.2/3.2
02	Edge/Selvage wire dia, mm	3.40	3.90	3.40/4.40	3.40	3.90	3.40/4.40	2.7	2.7/3.7
03	Lacing wire dia, mm	2.20	2.20	2.20/3.20	2.20	2.20	2.20/3.20	2.20	2.20/3.20
04	Polymer coating thickness, mm	NA	NA	Nominal – 0.50 Minimum – 0.40	NA	NA	Nominal – 0.50 Minimum – 0.40	NA	Nominal – 0.50 Minimum – 0.40
05	Typical sizes Length × Width × Height (m) (Number of diaphragms)	25 x 2, 25 x 3 and 25 x 4							
06	Tolerances in size of gabion boxes	Length and Width... ± 5 percent; Height > 0.3 m... ± 5 percent and Length + 1.0m to -0.0m, width + "D"							

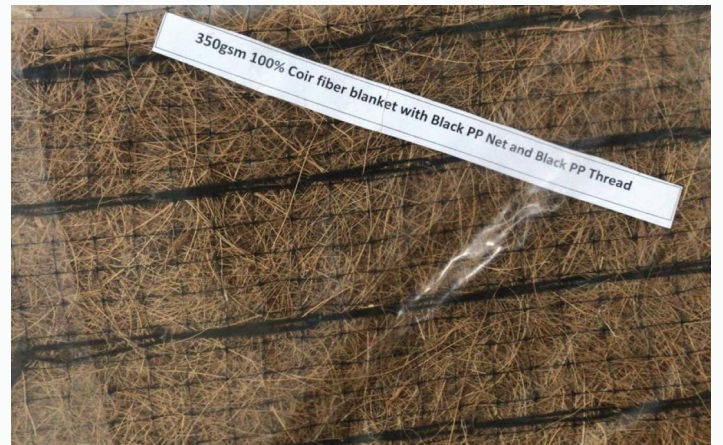
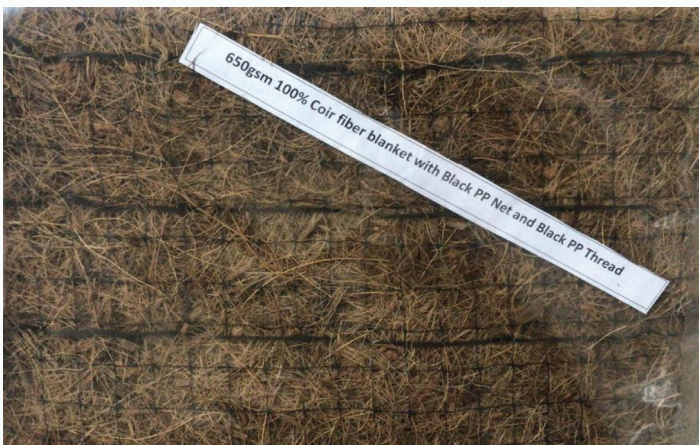


SSMAT EROSION CONTROL BLANKET

SSMAT Erosion control blanket is natural biodegradable solution for surface erosion protection. It provides immediate protection against highly vulnerable slopes. SSMAT Erosion control blanket support the natural vegetation by placing on top soil and are seeded. It is preformed protective blanket of coir fibres designed to protect soil from the impact of precipitation and overland flow, and retain moisture to facilitate vegetation. It biodegrades over a period of time (Normally 4-5 years) thus the protection function is done by vegetation. SSMAT Erosion control blanket is good option for slopes or even low velocity water ways. They help hold the soil in place and avoid issues with detachment of the soil caused by raindrops.



These SSMAT Erosion control blankets are used as face protection in soil reinforcement work which secures facia and protects the washout of top soil.

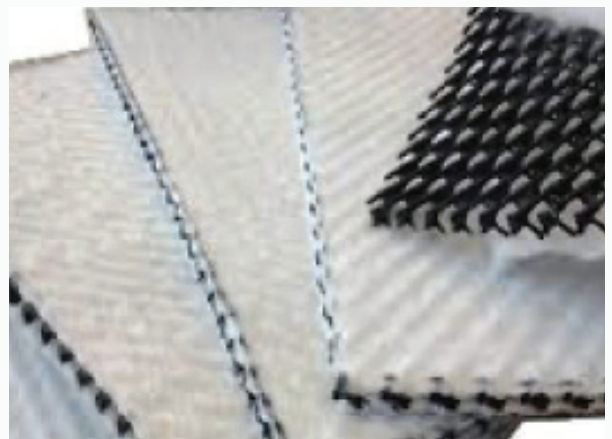
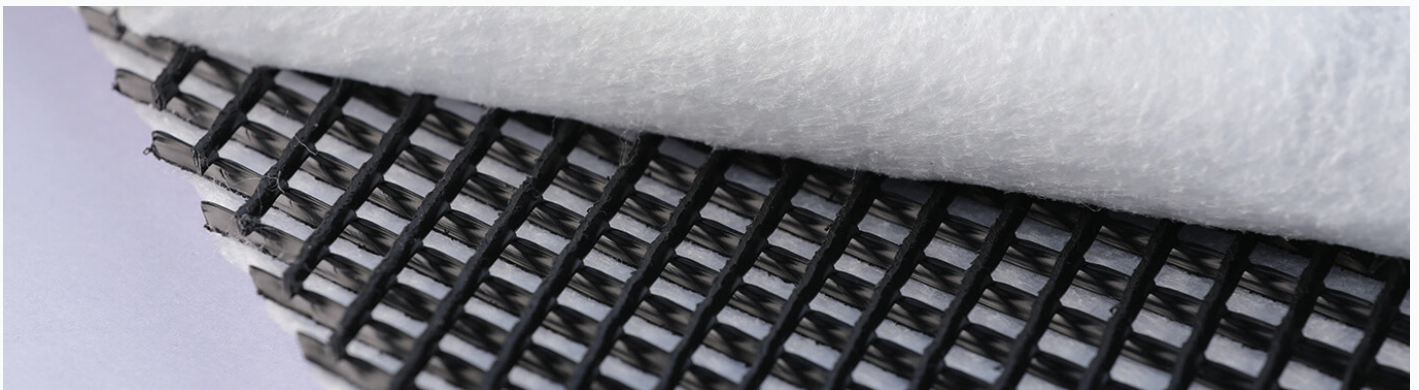


SSDRAIN DRAINAGE COMPOSITE

SSDRAIN Drainage Composite is a specifically designed Geocomposite to meet the drainage and protection requirements in structurally demanding water draining applications. It effectively eliminate hydrostatic pressure by collecting and conveying groundwater to a drain pipe for discharge.

Typical SSDRAIN Drainage Composite are made of lightweight three dimensional, high compressive strength polymeric core and SSGEOTEX Nonwoven Geotextile, provided on one side or both sides as per requirements. Depending upon the application, SSDRAIN Drainage Composite may also be provided with a Geomembrane or laminated SSGEOTEX Nonwoven Geotextile on one side of it to act as hydraulic barrier and at the same time drain of excess water for area above the drainage composite.

SSDRAIN Drainage Composite reduces the pore water pressure and thus increases the overall stability of earth retaining structures.



Ground Improvement/Basal Reinforcement



Soil Erosion Control / Embankment Protection



TECHNICAL DATA

Properties	Standard	Unit	GeoDrain GNGT 4.2
GEODRAIN GEOCOMPOSITE			
Thickness @ 2 kPa	EN ISO 9863	mm	≥ 4.5
Mass	EN ISO 9864	g/m ²	≥ 710
Tensile Strength	EN ISO 10319	kN/m	≥ 16
Puncture Strength (CBR)	EN ISO12236	N	≥ 3000
In Plane Permeability	EN ISO 12958	l/(m.s)	≥ 0.55
Hydraulic Gradient, i=1@100kPa	EN ISO 12958	l/(m.s)	≥ 0.55
Hydraulic Gradient, i=1@200kPa	EN ISO 12958	l/(m.s)	≥ 0.45
DRAINAGE CORE (GeoNet)			
Structure : Sets of parallel ribs overlaid and integrally connected having a Rhomboidal shape			
Raw Material : High density Polyethylene (HDPE), UV stabilized by carbon black, (black colour)			
Width		Cms.	200 to 400
EXTERNAL FILTER (SSGeotextile)			
Structure : Needle Punched and/or Thermally Bonded Nonwoven SSGEOTextiles			
Permittivity	ASTM D 4491	s-1	≥ 0.5
A.O.S	ASTM D 4751	mm	≤ 0.22
DIMENSION OF COMPOSITE			
Roll Dimensions (L X W)		Mtrs.	50/100 X 2.0
Filter Overlay (one side)		mm	100

SSLINK - GEOGRID



SSLINK Geogrid is Polyester (PET) Geogrid made up of high tenacity , high molecular weight and low carboxyl end polyester filament yarn with outer coating of advance polymer/pvc by sophisticated warp knitting technology to form quality SSLINK Geogrid.



Ground Improvement/Basal Reinforcement



Retaining Walls & Soil Reinforcement



Slope Protection & Stabilization

TECHNICAL DATA

Properties	Test Method	Unit	CTMGGU	CTMGGU	CTMGGU	CTMGGU	CTMGGU	CTMGGU	CTMGGU	CTMGGU	CTMGGU	CTMGGU
			40/20	60/20	80/30	100/30	120/30	150/30	180/30	200/30	250/30	300/30
Peak Tensile Strength (Minimum Average Roll Values)												
Machine Direction	ASTM-6637-2010	kN/m	40	60	80	100	120	150	180	200	250	300
Cross Machine Direction			20	20	30	30	30	30	30	30	30	30
Reduction Factors												
Creep-RF _{ca} @20 C & 100 years	ASTM D 6992/ISO 10319		1.49	1.49	1.49	1.49	1.49	1.49	1.49	1.49	1.49	1.49
Installation Damage-RF _{ca} Sand, D50 = 1.00 mm	ASTM D 5818/ISO 10319		1.09	1.09	1.09	1.09	1.09	1.09	1.09	1.09	1.09	1.09
Durability-RFD 4<pH<9	Q		1.15	1.15	1.15	1.15	1.15	1.15	1.15	1.15	1.15	1.15
LTDS - 100 years, Sand, 4<pH<9		kN/m	21.27	31.91	42.53	53.19	63.82	79.78	95.74	106.38	132.97	159.57
Pullout Interaction Coefficient, C.	ASTM-6706		0.8	0.8	0.8	0.8	0.8	0.8	0.8	0.8	0.8	0.8
Physical Properties												
Colour			Black									
Coating Type			PVC									
Textile Type			High Tenacity Low Shrinkage Polyester Yarn									
Yarn – Carboxyl End Group (CEG) Count	ASTM D 7409, GRI-GG7)	mmol/kg	12.1									
Yarn – Molecular Weight by Viscosity	ASTM D 4603, GRI-GG8)	g/mol	37106									
Roll Length		m	100	100	100	100	100	50	50	50	50	50
Roll Width (±4%)		m	2.40	2.40	2.40	2.40	2.40	2.40	2.40	2.40	2.40	2.40
Roll Area		sq.m	240	240	240	240	240	120	120	120	120	120
Roll Length (core tube)		mm	2600 mm									



SSGEOTEX WOVEN GEOTEXTILE



SSGEOTEX Woven geotextiles are manufactured by interweaving of a number of polypropylene threads perpendicular to each other which allow to obtain excellent mechanical properties. They perform the functions of separation and reinforcement. SSGEO-TEX Woven Geotextiles are referred to by their tensile strength and is suitable for long term applications. They have a very high load capacity and are commonly used to construct retaining structures, linear constructions, waste deposits, drainage systems etc.



SSGEOTEX NON WOVEN GEOTEXTILE



SSGEOTEX Non Woven Geotextile are permeable geosynthetics made of non woven materials used with soil, rock, or other geotechnical-related material as an integral part of a civil engineering project, structure, or system. SSGEOTEX Non Woven Geotextile are made from high quality polypropylene staple fibre that are needle punched to form a dimensionally stable fibre network. Their primary functions include filtration, drainage, separation, reinforcement and erosion control.

TECHNICAL DATA

Properties	Test Method	Unit	SP 100	SP 150	SP 200	SP 250	SP 300	SP 350	SP 400	SP 700	SP 1000
Mechanical Properties											
Tensile strength	ASTM D 4595	kN/m	6.0	10	12	16	20	24	28	45	60
Elongation at break	ASTM D 4595	%	> 50	> 50	> 50	> 50	> 50	> 50	> 50	> 50	> 50
Grab Tensile Strength	ASTM D 4632	N	330	550	710	850	1050	1250	1450	2300	3350
Elongation at break	ASTM D 4595	%	> 55	> 55	> 55	> 55	> 55	> 55	> 55	> 55	> 55
Trapezoidal Tear Strength	ASTM D 4533	N	120	180	270	320	400	450	510	750	1150
Puncture Strength (CBR)	ASTM D 6241	N	750	1400	1850	2300	3000	3500	4000	7000	9500
Hydraulic Properties											
A.O.S	ASTM D 4751	microns	100	100	80	80	75	75	75	75	75
Flow Water Rate (@ 50mm head)	ASTM D4491	l/m ² /sec	70	70	50	50	40	40	40	30	30
Physical properties											
Mass Per Unit	ASTM D 5261	g/m ²	100	150	200	250	300	350	400	700	1000
Thickness	ASTM D 5199	mm	0.6	1.2	1.6	1.8	2.2	2.4	2.6	4	5



**ROAD,
RAILWAY
& HIGHWAY**

Our extensive participation in projects of various kinds guarantees our clients that we can comprehend their infrastructure issues and adapt solutions to match their specific needs. Shri Sai Eco Solutions can assist clients with infrastructure projects of any size.



**ENVIRONMENTAL
PROTECTION**

The environmental protection industry encompasses a wide range of industries that must protect the environment from contamination. Landfills, agricultural works, storm water attenuation zones, storage ponds, and leachate lagoons in mining operations are examples of typical applications for our systems.



**RIVER BANK
& COASTAL
PROTECTION**

For coastal and river management projects, we've increased our solution range. We may now choose from a logically graded set of interventions to tailor the solution to our clients' needs.



**POWER, MINING
& HEAVY
INDUSTRIES**

To minimise mining productivity disruption, mine owners and operators demand high-quality geotechnical, geological, and hydraulic solutions that are supplied on time and installed quickly.



**URBAN
DEVELOPEMNT
/REAL ESTATE**

Geotechnical operations are of importance with respect to soil sampling, investigating geomaterials properties, controlling groundwater level and flow as well as environmental and hydrological interactions.



+91 9545754333 | +91 9890297265



reachus@shrisai-india.com | reachus@ssgf.in



Plant Address:

GAT No 263, Grampanchayat Milkat No 4413 & 4412,
Wadegaon Road, Kesnand, Taluka - Haveli,
Pune, India- 412207

