



#ROADSAFETY  
#INFRASTRUCTURE  
#SaveLIVES

# RAISED PAVEMENT MARKER

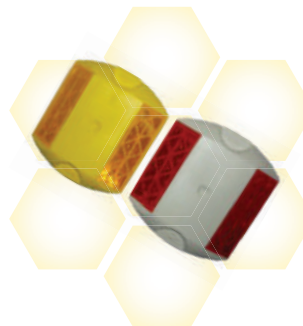
## Twin Moulded Shank



- Category A road studs as per MoRTH specification
- Capacity to bear extra shear with high durability
- 4X more reflective than minimum requirement as per ASTM D4280 & MoRTH specifications
- Approximately 1.5X to 2X more compressive strength than minimum requirement as per MoRTH specification

- Height: 16 +/- 0.1mm
- Width: 101.1 +/- 0.1mm
- Length: 88.9 +/- 0.1mm
- Shank Length: 30 +/- 2mm
- Slope: 30.5 +/- 0.1 degrees

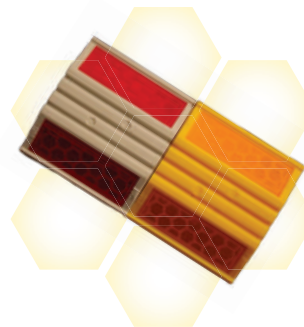
## ILC Non Shank



- Category A road studs as per MoRTH specification
- High retro-reflectivity performance for wide range of observation angles
- 4X more reflective than minimum requirement as per ASTM D4280 & MoRTH specifications
- 1.5X more compressive strength than minimum requirement as per MoRTH specification

- Height: 16 +/- 0.1mm
- Width: 101.1 +/- 0.1mm
- Length: 88.9 +/- 0.1mm
- Shank Length: 30 +/- 2mm
- Slope: 30.5 +/- 0.1 degrees

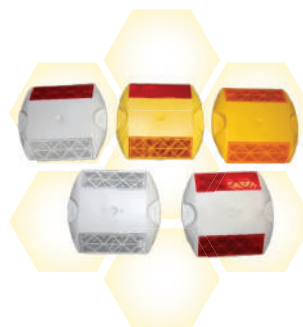
## Next Generation



- Category A road studs as per MoRTH specification
- High impact resistance and high compressive strength with good retro-reflectivity
- Longer road presence and lower life cycle cost
- 4X more reflective than minimum requirement as per ASTM D4280 & MoRTH specifications
- Approximately 1.5X to 2X more compressive strength than minimum requirement as per MoRTH specification
- 1.5X more compressive strength than minimum requirement as per MoRTH specification
- Meets and exceeds ASTM D4280 & MoRTH performance standards

- Height: 18mm +/- 0.8mm
- Width: 80mm +/- 0.5mm
- Length: 89 mm +/- 0.5mm
- Shank Length: 30 +/- 2mm
- Slope: 30.5 +/- 0.1 degrees

## Polycarbonate Types



- Reflective Area: 16 sq cm
- Width: 101.1 +/- 0.1 mm
- Length: 88.9 +/- 0.1 mm
- Slope: 30.5 +/- 0.1 degrees
- Load Bearing Capacity: 13.5 tons



## Solar Raised Pavement Marker

- Uses 3M light guide technology for 360 degree & 800 m minimum visibility as per MoRTH specification
- 1.5X more compressive strength than minimum requirement as per MoRTH specification
- Improved anchorage to road through double shank and base design
- Water/dust ingress protection with IP68 rating
- Meets and exceeds MoRTH specification
- Clear visibility in foggy and rainy conditions
- Shelf life of 12 months from date of manufacturing
- Blinking rate more than 125 Hertz
- 3M retro-reflective lens for visibility in passive mode



- Height: 65 +/- 2mm
- Diameter: 136 +/- 4mm
- Shank Length: 40mm
- Shank Breakage Strength: 820 kgf
- Shank Diameter: 25mm



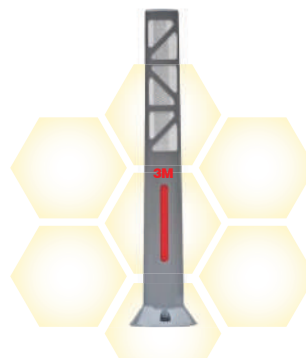
\* Multiple variants & lens colour available

## 3M<sup>TM</sup> DELINEATORS

- Meets & exceeds IRC 79-2019 standards
- Robust product design with powder coated body for corrosion resistance
- Powder coated inner-body and thermoplastic outer cover for corrosion resistance
- Alternate band of black paint and white Type XI retro-reflective sheeting for excellent visibility



## Standard Delineator



## Vertical Delineator



- Height: 800mm
- Thickness: 30 - 80mm
- Base Depth: 300mm
- Impact Strength: 600J/m

# 3M<sup>TM</sup> MEDIAN MARKER

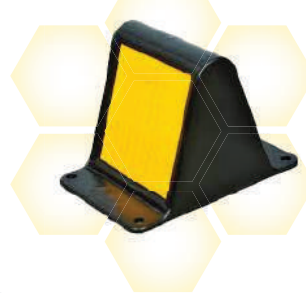
- Meets & exceeds IRC 79-2019 standards
- 2X more reboundable than minimum requirement as per IRC 79-2019 specification
- Tensile strength exceeds IRC specification

## Flexible Median Marker



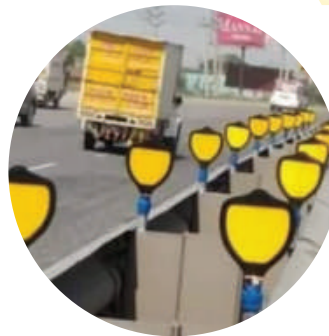
- Total height: 180mm
- Body Thickness: 6.5mm
- Shank Depth: 30mm
- Reflective area: 90sqcm

## Median Marker



- Excellent visibility during day/night & down/dusk conditions
- Excellent angularity offering highest visibility
- Good long-distance visibility for extended distances, enhancing safety standards on road
- Excellent UV and outdoor weathering resistance

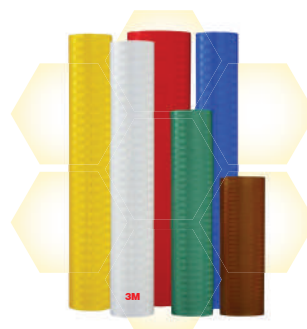
- Height: 150mm
- Width: 100mm
- Length: 100mm
- Impact Strength: 600J/m



# 3M<sup>TM</sup> REFLECTIVE SHEETING

- Engineer Grade Prismatic Reflective Sheeting Series 3430 is a non-metalized microprismatic lense retroreflective sheeting designed for production of reflective commercial signs and noncritical traffic control signs that are exposed vertically in service. Series 3430 sheeting can easily be identified by the visible integral "EGP" marking.

## Engineer Grade Prismatic (Code 3430)



- Reflective Area of Usage: NH/Sh/Rural Roads/City/Urban)
- Size can be customised as per requirement





- HIP is engineered to offer versatile application possibilities - from traffic signages; to work zone markers and delineators. Backed by reliable pressure sensitive adhesive for a strong bond, HIP delivers vivid daytime visibility and enhanced night time visibility.



### High Intensity Prismatic (Code 3930)

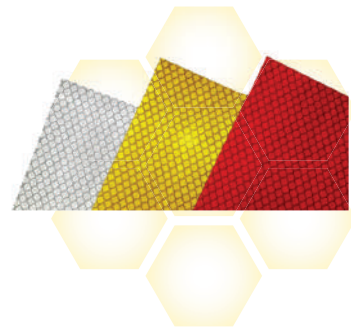


- Size can be customized as per requirement

- DG is currently the benchmark for reflective films across the world. Incorporating 'full cube' technology for phenomenal performance DG's optical elements are 100% efficient and reflect up to 60% of available light (the highest compared to regular prismatic films).

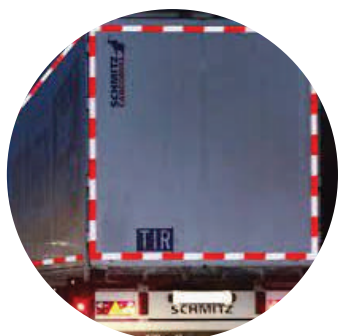


### Diamond Grade Reflectives (Code 4090)

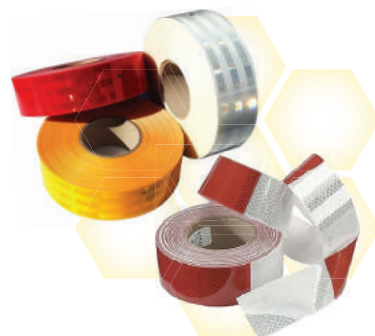


- Size can be customized as per requirement

- 983 Conspicuity Sheeting with polycarbonate microprisms give night time vehicle visibility a whole new brightness. And 983's tough engineering is designed for extreme road conditions.



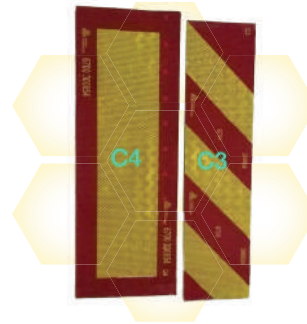
### Conspicuity Sheeting



- Size: 2" x 50 mtrs.
- Multiple variants & lens colour available
- Size can be customized as per requirement

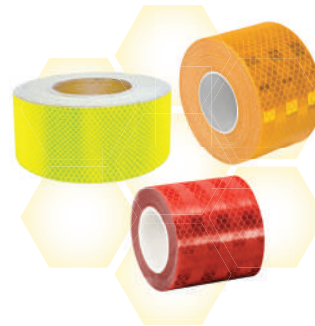
### 3M C3 C4 Rear Marking Tape

- 3M Diamond Grade Conspicuity Markings Series 983 is a highly reflective microprismatic lens sheeting



- Width: 130 mm
- Highly reflective at wide angles
- Bright vivid colours
- Superior day and night-time brightness

### 983 Series



- Mainly for Construction Site
- Size Can be customized as per requirement.

# 3M<sup>TM</sup> ALUMINIUM BACKED FLEXIBLE PRISMATIC

### Aluminium Flexible Prismatic

- 3M AFP is a new generation flexible sheeting that is designed for high visibility in harsh road conditions. Can be applied on any rough surfaces: tree trunks, concrete, metals etc. Also, ensures optimum visibility of critical road elements.
- Meets & exceeds IRC 79-2019 standards
- Non-metallic Prismatic Type VI retro-reflective sheeting
- Backed with a 50 micron Aluminium (Al) foil with a pre-coated pressure sensitive adhesive and easily removable liner
- Very high conformability and non-returning dead-fold characteristics required for application on rough and uneven surfaces
- Retro-reflective sheeting shall show no cracking or de-lamination outside of the actual area of impact when subjected to the impact test in accordance with S2.2.1 of ASTM D4956-09
- Variants: Slant, Arrow, Plain



# EPOXY SOLUTION FOR RPM & FMM FIXING

## Epoxy Solution Kit

- Part A - Resin - 1 Kg pack
- Part B - Hardener - 1/2 Kg pack
- Part C - Filler - 3 Kg pack



### Instruction:

- Divide the whole kit in mixture of 2-3 parts. You will not be able to use it after 15-30 mins
- Whole kit is sufficient to apply around 45 RPMs
- Final setting time is typically 40-55 minutes (could be longer at lower temperature)

# TRAFFIC CONES

## Traffic Cones

- Traffic cones are usually cone-shaped markers that are placed on roads or footpaths to temporarily redirect traffic in a safe manner. They are often used to create separation or merge lanes during road construction projects or automobile accidents, although heavier, more permanent markers or signs are used if the diversion is to stay in place for a long period of time.



- Base: 390 x 390mm
- Sleeve Width: 4/6inch
- Weight: 1.5kg/2.2kg



# SPEED BREAKER

- Speed Breakers are safety devices that keep a check on the speed of the fast-moving traffic. These devices use vertical deflection to slow down the speed of automobile traffic to improve safety conditions.



## Plastic Speed Breaker



- Length: 500mm
- Width: 390mm
- Height: 50mm

# CORNER GUARD



## L-Shaped Guard



- Height: 800mm - 1200mm
- Reflective Tape: 70mm x 4-6 tape

# CONVEX MIRROR

- Material: Polycarbonate
- Lens: Unbreakable
- Size: 18/22/24/30/32/40 inch



## Get in Touch

- +91 9890297265
- reachus@shrisai-india.com / reachus@ssgf.in
- shri-sai-eco-solutions-pvt-ltd
- shrisaiecosolutions
- GAT No 263, Grampanchayat Milkat No 4413, 4412 Wadegaon Road, Kesnand, Taluka- Haveli, Pune, India- 412207